



Somali Region

# DREAM II - Pre-Conference- 2

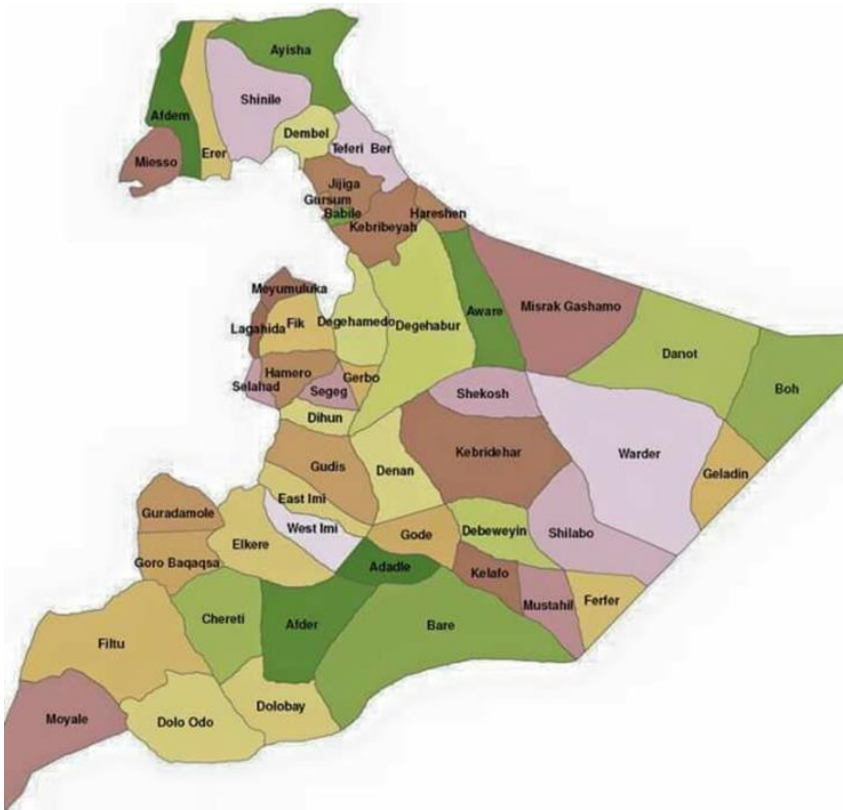
Cooperation for pastoralist and agro-pastoralist communities  
in lowland areas

12 November 2020

Supported by



# Introduction



- Area 350, 000 Km<sup>2</sup>
- Population approximately 8 m
- Cultivable land 2, 100, 000 ha
- Cultivated land 455, 250 ha
- Irrigable land more than 620,000 ha
- Somali Region has 17 rural livelihood zones, generically classified as **pastoral, Agro pastoral, Riverine and sedentary farming livelihood zones**

Supported by



DREAM II Pre-conference 2 - Cooperation for pastoral and agro-pastoral communities in lowland areas



Implemented by



# Cont...

- ▶ Lowland Livelihoods Resilience Project (LLRP) which recently launched project operates 36 woredas from 11 zones.
- ▶ The Lowland Livelihood Resilience Project (LLRP) scope is to enhance rangeland management, livelihood improvement and diversification, and market dimensions to promote livelihoods resilience components of the intervention.
- ▶ Project consists of four (4) major elements:
  - 1: Integrated Rangeland Development and Management
  - 2: Livelihood Improvement and Diversification
  - 3: Improving Basic Services and Capacity Building
  - 4: Project Management, Monitoring and Evaluation

Supported by



# Cont...

- ▶ In which geographical region is the project active

36 Woreda In Somali Region

- ▶ What is the time frame and budget?
- ▶ The project is more than half a decade ie. 6 years time
- ▶ How are the main partners?
- ▶ DRMB, Livestock Bureau, Agriculture and Natural Resource Bureau, Environment, forestry and climate, change Bureau, SoRPARI and JJU.

Supported by



DREAM II Pre-conference 2 Cooperation for pastoral and agro-pastoral communities in lowland areas

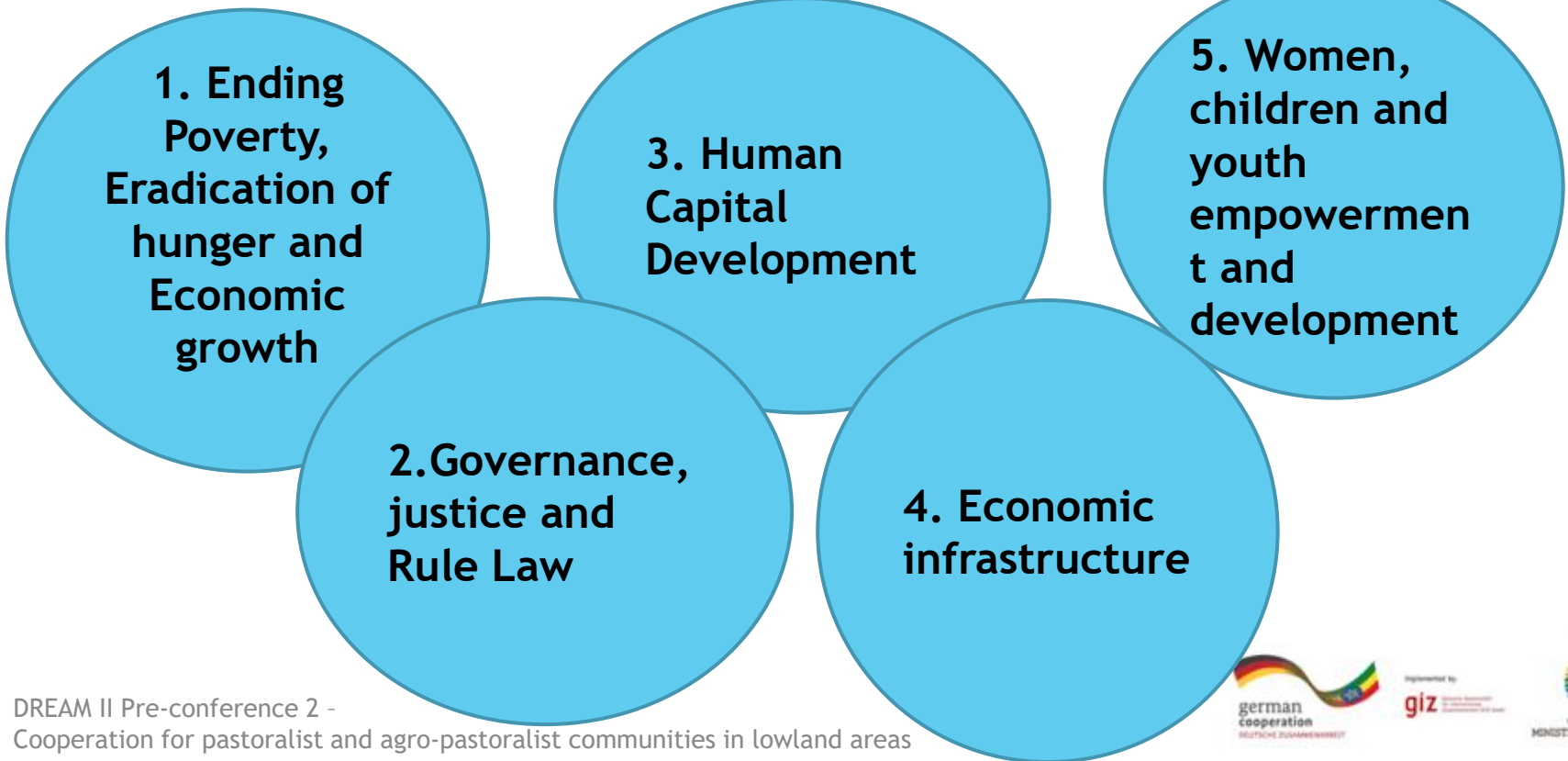


Implemented by  
giz



# Link to the overall development framework

- ▶ Somali region have set five strategic development road maps for the upcoming ten years considering GTP II which ended 2012 EFY, SDG which is to be ended at 2030 and Africa Agenda 2063 (rolling 10-year plans)
- ▶ **Five Strategic Priorities for Somali region are:**



Supported by



DREAM II Pre-conference 2 - Cooperation for pastoralist and agro-pastoralist communities in lowland areas



# Cont...

- ▶ The project is directly linked the strategic development road map of the region, GTPs, SDCs, and pastoral Development Policy in terms of Development and integration of rangeland management and Pastoral livelihood Diversification.

Supported by



# Cooperation with different partners

- ▶ How is the cooperation between the programme and the main governmental institutions organized (for instance in implementation, scaling innovations, in capacity building, in community support, in improved governance)?
- ▶ The cooperation is good since the programs and Projects operating in the region are directed by regional steering committee that guides the program/projects implementation and road maps based on key Priorities issues for the region.
- ▶ How is the cooperation between the programme and other organizations (for instance NGOs, academic institutions) organized?
- ▶ The cooperation between Programs/projects, NGOs and Academic institutions is good since we have regular cluster meetings, however, it is needs to be strengthened.

Supported by



# Strengthening cooperation and networking

## Opportunities and restraints in cooperation and networking and how to overcome them?

- ▶ The regular cluster meetings are the main opportunities for better collaboration and net workings and it should be maintained.
- ▶ Efficiency resource use
- ▶ Effective programs/projects implementation
- ▶ Accountability and transparency
- ▶ Some of the restraints in cooperation and networking are;-
  - stakeholders are not regularly participating cluster meetings
  - we can overcome this by upholding the roles and responsibilities of the respective stakeholders.

Supported by





# Picture that tells it all

- Productive safety net program (PSNP)
  - ✓ Public works
- Development Response to displacement impact (DRDIP)



DREAM II Pre-conference 2 - Cooperation for pastoral and agro-pastoral communities in lowland areas



ICRISAT INTERNATIONAL CROPS RESEARCH INSTITUTE FOR THE SEMI-ARID TROPICS

Flood-Resilient Livelihoods Network Foundation

**THANKS FOR YOUR  
ATTENTION**