

Paul Roden
GIZ Ethiopia



DREAM - Learning Event II

Institutionalising Participatory Planning Processes

Wednesday 28 April 2021



Supported by



Implemented by
giz Deutsche Gesellschaft
für Internationale
Zusammenarbeit (GIZ) GmbH



Schweizerische Eidgenossenschaft
Confédération suisse
Confederazione Svizzera
Confederaziun svizra

Swiss Agency for Development
and Cooperation SDC



Setting the background

Socio-political conditions

- ▶ Afar and Somali: emerging regions with under-staff and under-capacitated governmental organisations
- ▶ Participatory planning approaches are new and not yet fully part of organisational culture
- ▶ A communal land use systems

Environmental conditions

- ▶ A dryland environment: natural resource rehabilitation takes longer owing to the spatial and temporal distribution of rainfall
- ▶ Multiple causes of land degradation: human and climatic pressures
- ▶ A watershed rehabilitation approach: covering a large and varied landscape



Overview to institutionalising participatory planning

What is it?

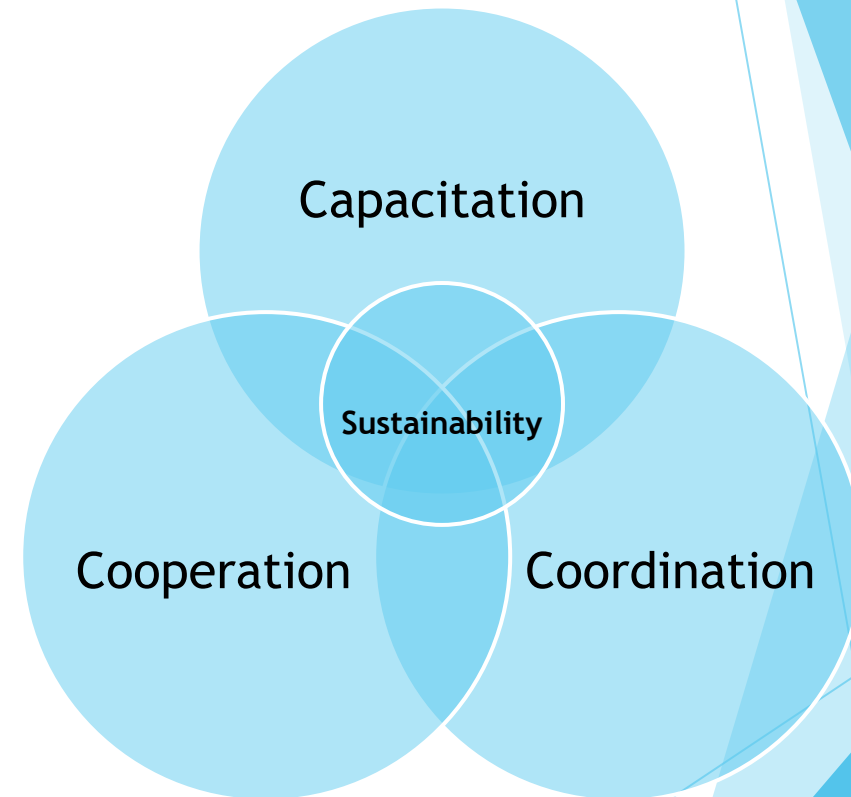
- ▶ A process to integrate planning activities and values into organisational culture for sustainable natural resource management

Why do it?

- ▶ Greater efficiency in resource use
- ▶ Integrating multiple actors in decision making leads to enhanced sustainability

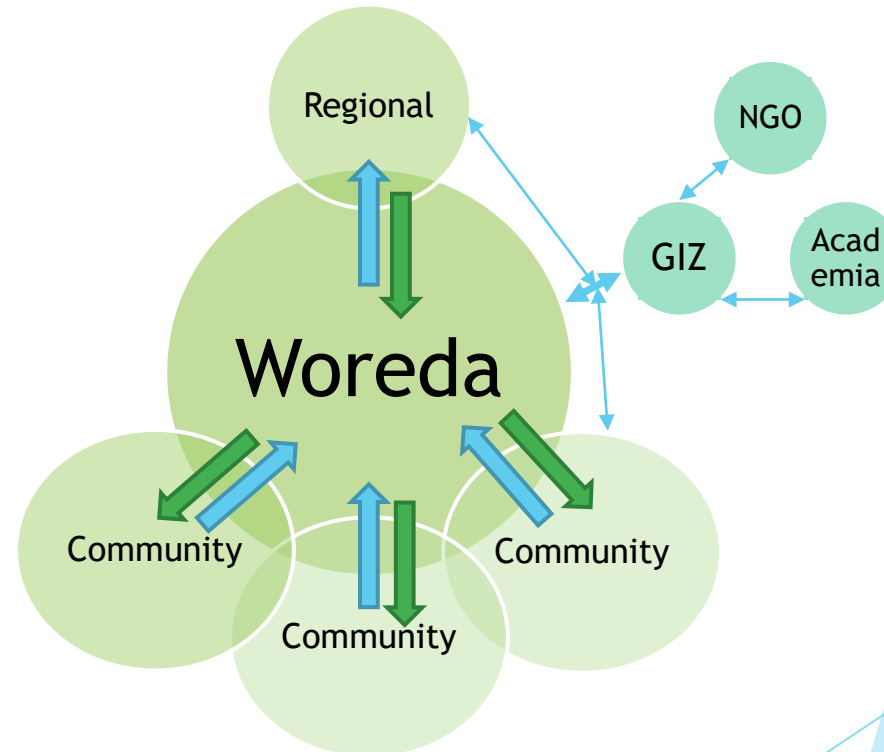
How to do it?

- ▶ A multi-stakeholder and multi-level approach
- ▶ Organisational capacity building
- ▶ Include local social norms and values



The GIZ DVRPU planning approach

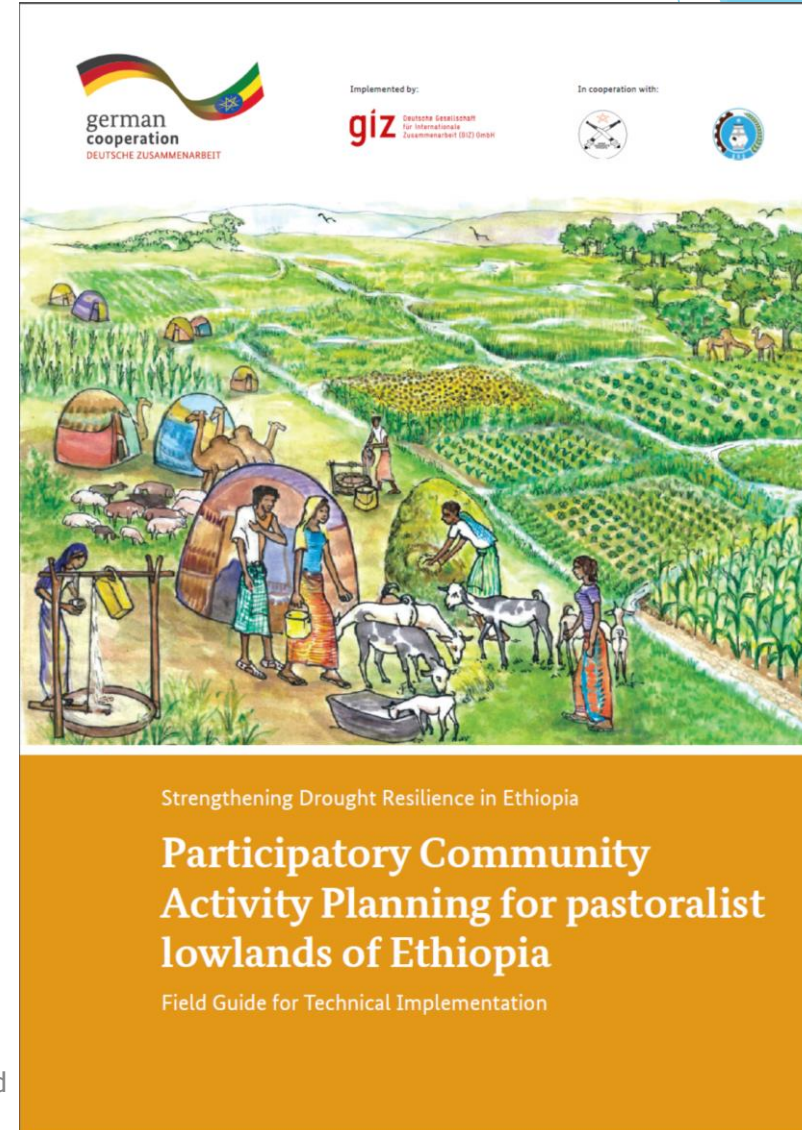
- ▶ The Woreda level is the entry point for planning and budgeting of activities
- ▶ There is scope to bridge the planning gap between all involved stakeholders



GIZ support to the planning process

Woreda and Community Level

1. Technical advice to regional and staff in Woreda to mainstream participatory planning results into the Woreda annual and five-year plans ([capacitation, cooperation](#))
2. Developed the PCAP field guide to support informed and inclusive decision-making and budget allocation ([capacitation](#))
 - ▶ A multi step process led by a **woreda core planning team** which includes: site selection, awareness raising, early securing of stakeholder commitment, to....community planning of activities and a process to include these activities in woreda plans and budgets
 - ▶ Infotechs: a basket of approaches and technological options and choices for natural resource management and productive land use



GlZ support to the planning process

Woreda and Community Level

- ▶ Training of DAs and Woreda Office experts in participatory approaches (capacitation)
 - ▶ Trainings provided and a manual developed
- ▶ Important: Introducing the fundamental principles of participation via practical in the field training with communities



GLZ support to the planning process

Woreda and Community Level

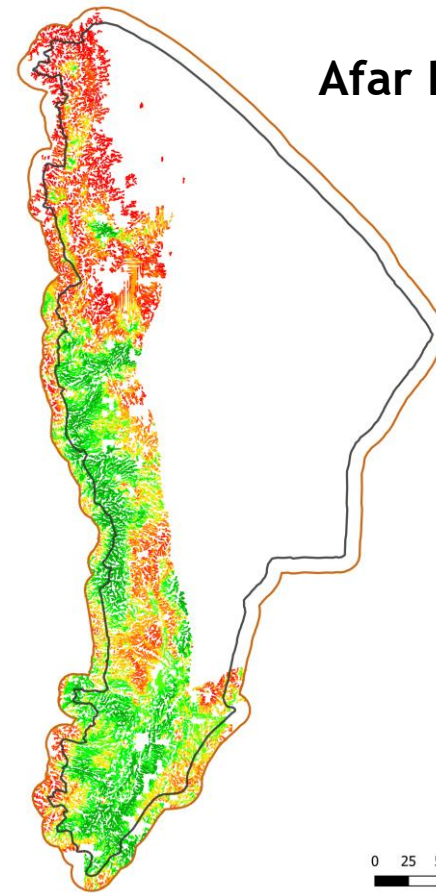
- ▶ Involving the community in the strategic and management processes of planning in direct collaboration with Woreda planning team via participatory approaches (capacitation, cooperation)
- ▶ Community Based Organisations (capacitation, coordination, cooperation)
- ▶ Establishing byelaws for the management of activities (capacitation, coordination, cooperation)



GLZ support to the planning process

The Woreda and Regional Level

- ▶ Provision of remote sensed and GIS data and training on these tools for informed decision making to partners (capacitation, cooperation)
- ▶ Identify dry valleys that are suitable for land rehabilitation via satellite imagery and the suitability matrix (coordination)
- ▶ Identify most suited areas for rehabilitation with physical (coordination)



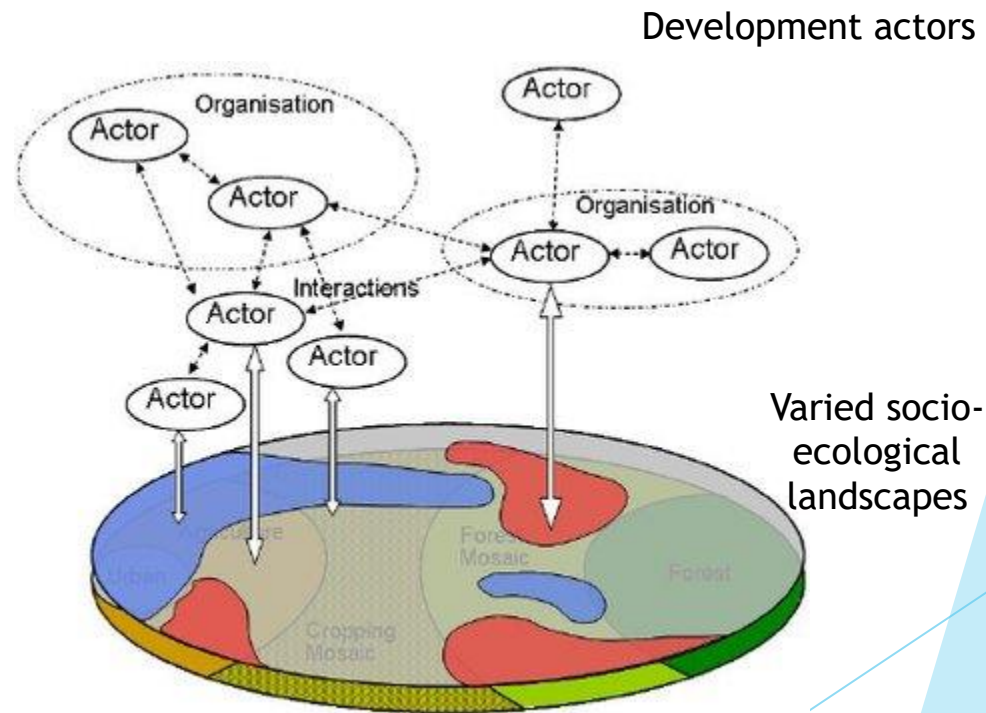
Afar Region



GLZ support to the planning process

The Regional, and other Levels

- ▶ Contributions to stakeholder coordination in the context of participatory planning ([cooperation](#), [coordination](#)) - specifically the DREAM Conference 2019 - Participatory Planning Working Group
- ▶ Developing a decision-support tool at the regional level for the coordination on NRM interventions - a **digital database of DVRPU activities** ([capacitation](#), [coordination](#), [cooperation](#))



Modified from: Messerli and Heinemann (2007)





Figure 6: Worked Head and Core Planning Team discuss community planning

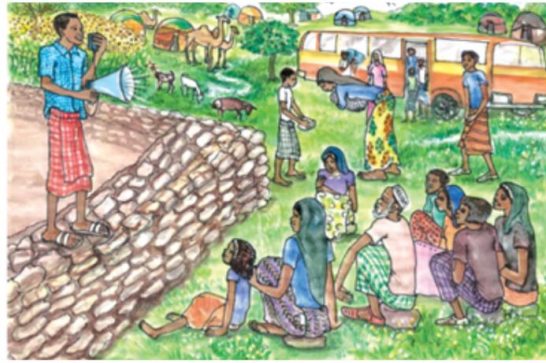


Figure 7: Planning the community education team

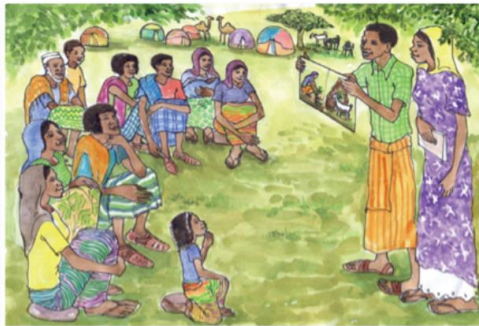
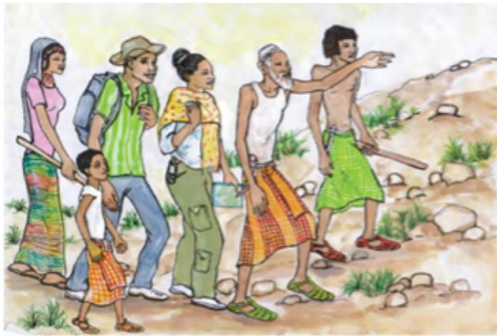


Figure 18: Visual solution discussion



Figure 19: Community discussion a map



Figure 20: Meeting of Khat Khat community members and community



Figure 21: Two communities sharing one water point



Participatory Planning

Supported by



DREAM Learning Event II - Educational institutionalization of the Dry Valley Rehabilitation and Productive Use Approach



Implemented by:
giz
Deutsche Gesellschaft
für Internationale
Zusammenarbeit (GIZ) GmbH

