



DREAM - Pre-event

Strengthening participatory planning - GIZ-SDR Experiences

DVRPU Engagement Approach

Wednesday 16 June 2021

Paul Roden
Advisor for Landscape and Participatory Planning
GIZ - SDR Programme

Supported by



Setting the background

Socio-political conditions

- ▶ Afar and Somali: emerging regions with under-staffed and under-capacitated governmental organisations
- ▶ Participatory planning approaches are relatively new and not yet fully part of organisational culture
- ▶ Communal land use systems

Environmental conditions

- ▶ Its a dryland environment - land rehabilitation takes longer
- ▶ Increasing land degradation - human and climatic conditions
- ▶ A watershed approach - covering a large and varied landscape

An overview to institutionalising participatory planning

What is it?

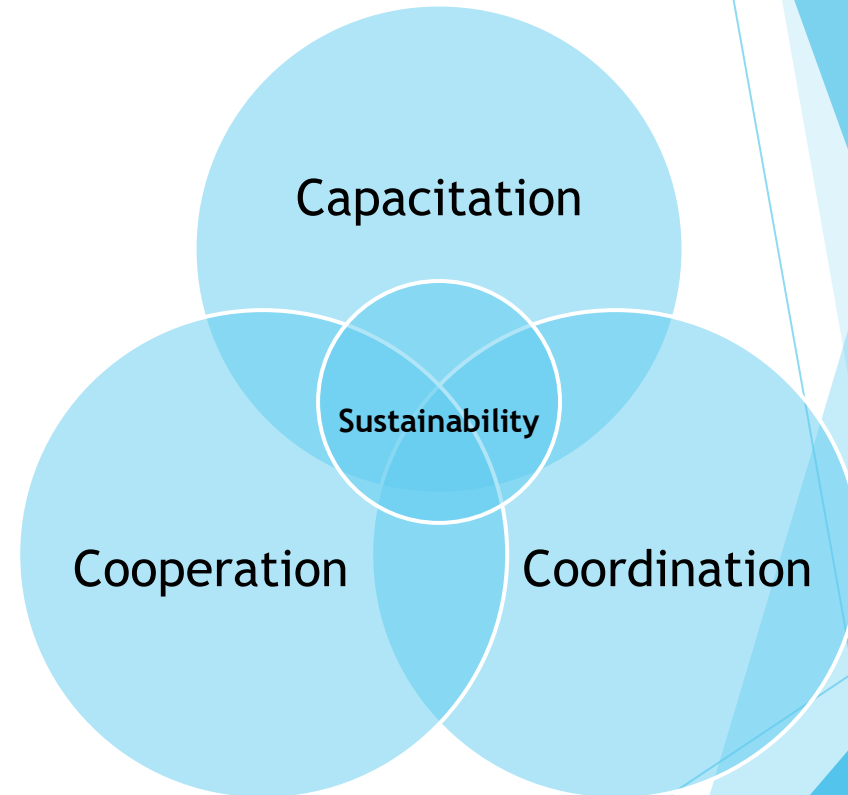
- ▶ A process to integrate planning activities and values into organisational culture for sustainable natural resource management

Why do it?

- ▶ Greater efficiency in resource use
- ▶ Integrating multiple actors in decision making leads to enhanced sustainability of interventions

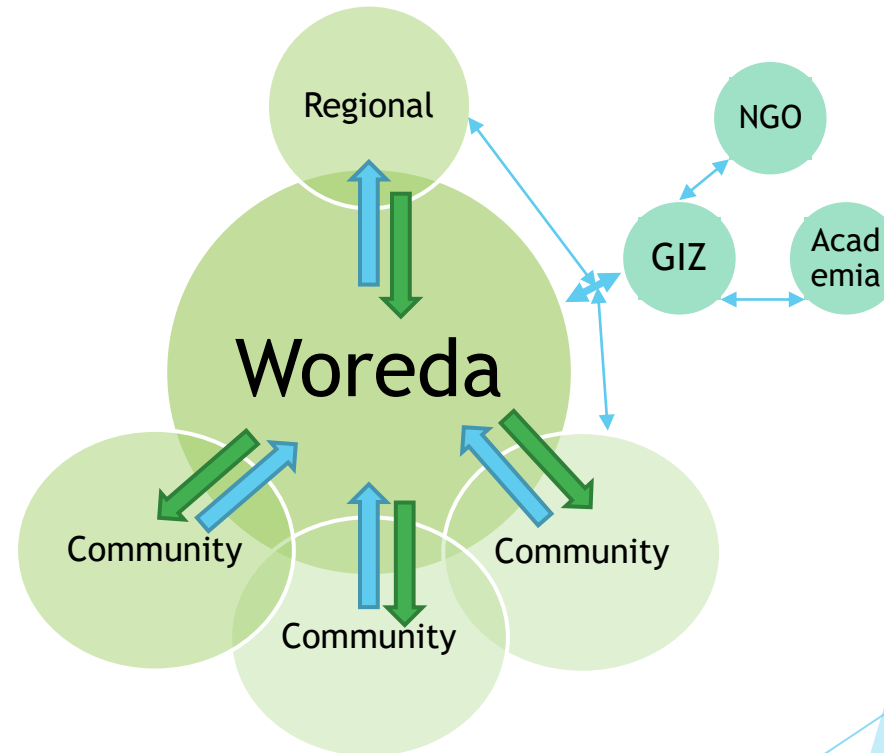
How to do it?

- ▶ A multi-stakeholder and multi-level approach
- ▶ Organisational capacity building
- ▶ Include local social norms and values



The GIZ-SDR planning approach

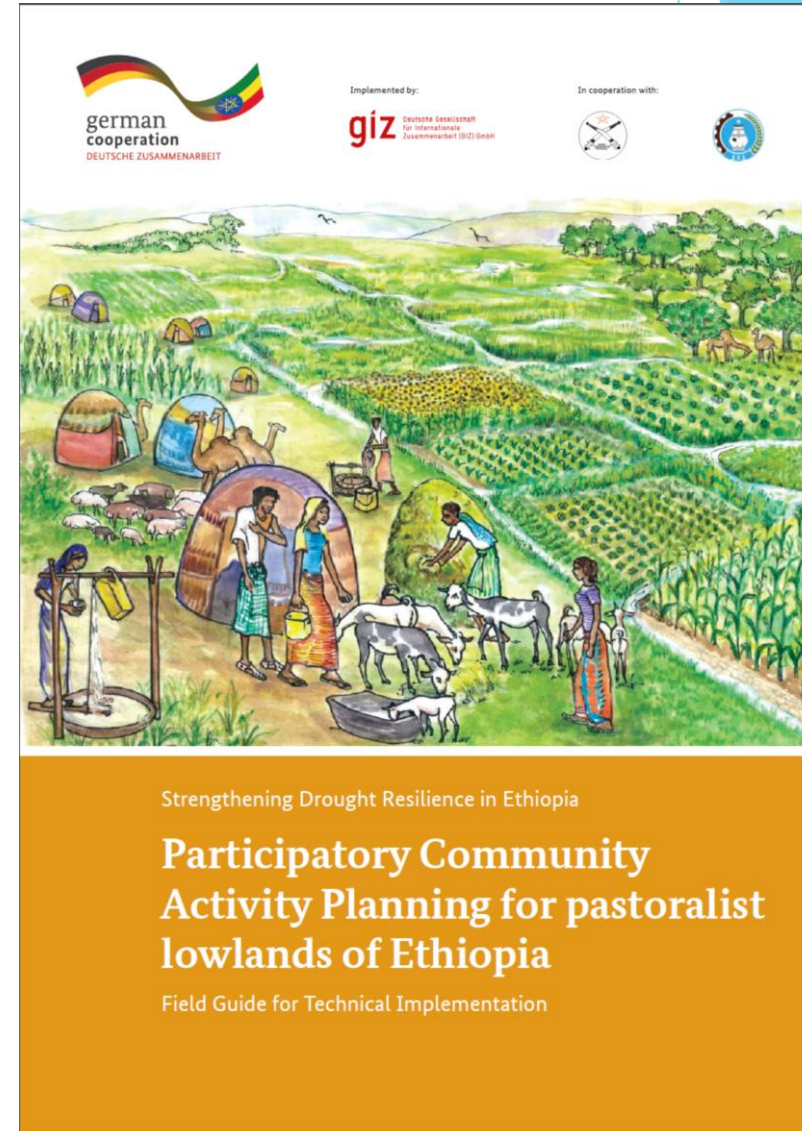
- ▶ Aligns with the government planning processes
- ▶ The Woreda level is the entry point for planning and budgeting of activities
- ▶ There is scope to bridge the planning gap between all involved stakeholders



GIZ support to the planning process

Woreda and Community Level

1. **Technical advice** to regional and staff in Woreda to mainstream participatory planning results into the Woreda annual and five-year plans (**capacitation, cooperation**)
2. Developed the **PCAP field guide** to support informed and inclusive decision-making and budget allocation (**capacitation**)
 - ▶ **A multi step process led by a woreda core planning team** which includes: site selection, awareness raising, early securing of stakeholder commitment, to....community planning of activities and a process to include these activities in woreda plans and budgets
 - ▶ **Infotechs:** a basket of approaches and technological options and choices for land rehabilitation and productive land use



GIZ support to the planning process

Woreda and Community Level

- ▶ Training of DAs and Woreda Office experts in **participatory approaches** (capacitation)
 - ▶ Trainings provided and a manual developed
- ▶ Important: Introducing the **fundamental principles of participation** via practical in the field training with communities



GIZ support to the planning process

Woreda and Community Level

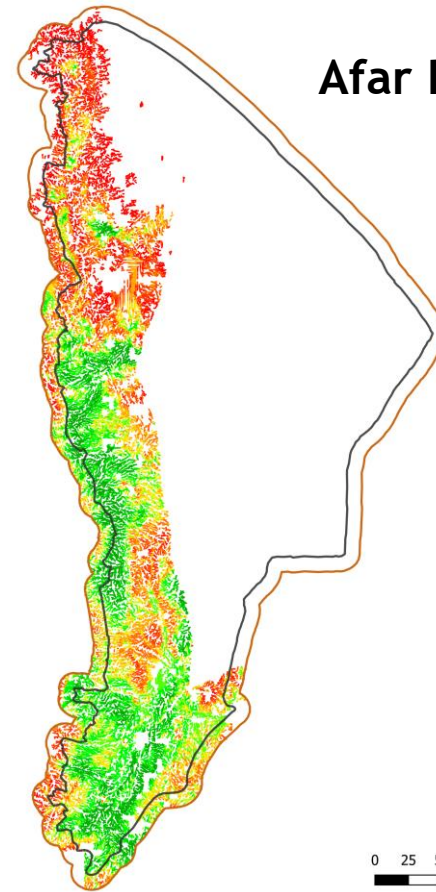
- ▶ Involving the community in the strategic and management processes of planning in direct collaboration with Woreda planning team via participatory approaches (capacitation, cooperation)
- ▶ Community Based Organisations (capacitation, coordination, cooperation)
- ▶ Establishing byelaws for the management of activities (capacitation, coordination, cooperation)



GIZ support to the planning process

The Woreda and Regional Level

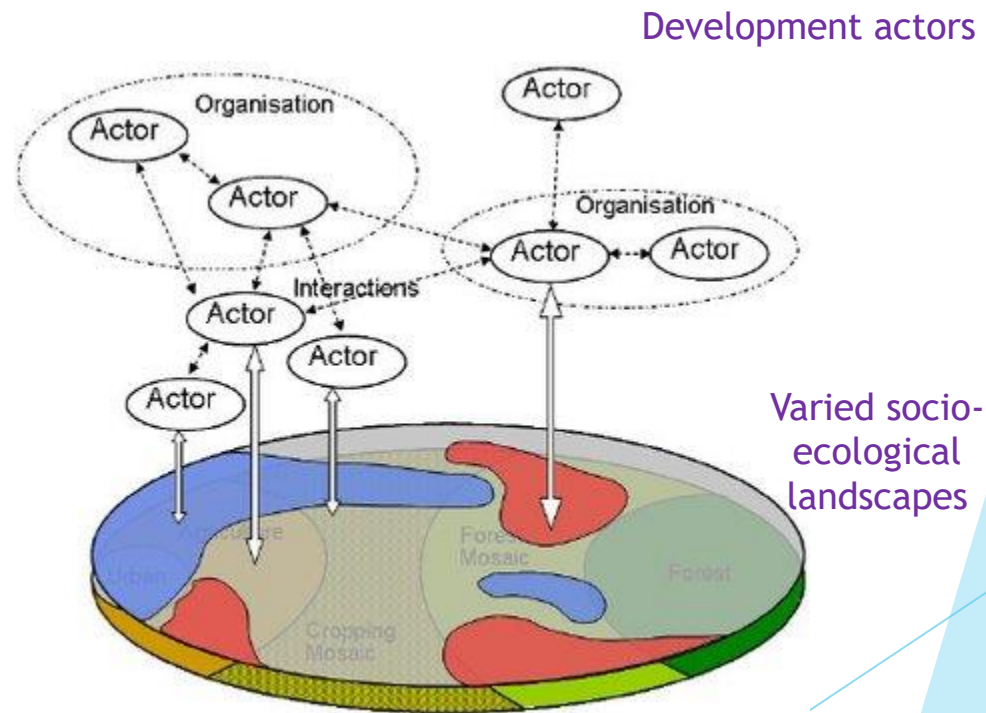
- ▶ Provision of remote sensed and GIS data and training on these tools for informed decision making to partners (capacitation, cooperation)
- ▶ Identify dry valleys that are suitable for land rehabilitation via satellite imagery and the suitability matrix (coordination)
- ▶ Identify most suited areas for rehabilitation with physical (coordination)



GIZ support to the planning process

The Regional, and other Levels

- ▶ Contributions to **stakeholder coordination** in the context of participatory planning (*cooperation, coordination*) - specifically the DREAM Conference 2019 - Participatory Planning Working Group
- ▶ Developing a **decision-support tool** at the regional level for the coordination on land rehabilitation interventions - a **digital database of DVRPU activities** (*capacitation, coordination, cooperation*)



Modified from: Messerli and Heinimann (2007)



Figure 6: Woreda Head and Core Planning Team discuss community planning

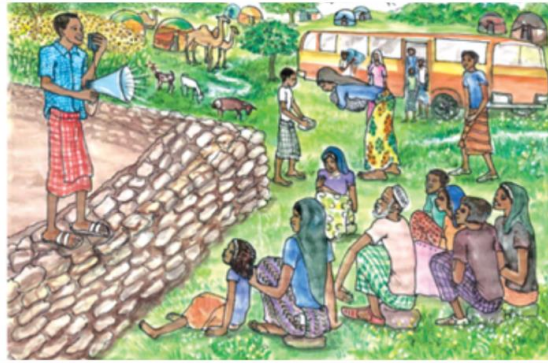


Figure 7: Facilitate the community planning team

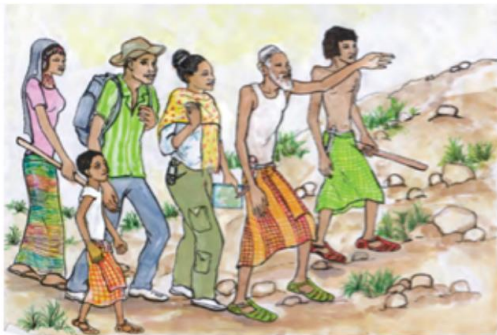
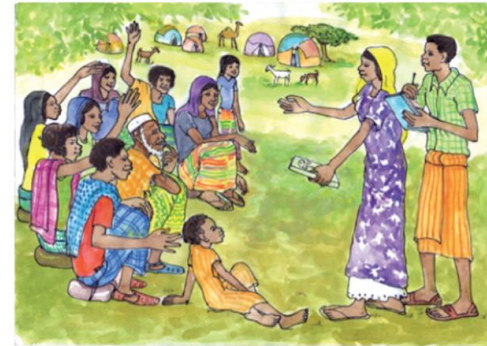


Figure 18: Visual solution discussion



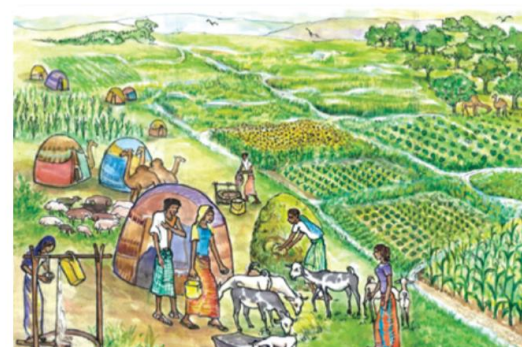
Figure 19: Community solution discussion



Figure 20: Presentation of KAP to community members



Figure 21: Two communities sharing one water point



Participatory Planning

Supported by



Implemented by
giz



Schweizerische Eidgenossenschaft
Confédération suisse
Confederazione Svizzera
Confederaziun Svizra
Swiss Agency for Development
and Cooperation SDC

