



# Supporting local planning and the importance of mapping

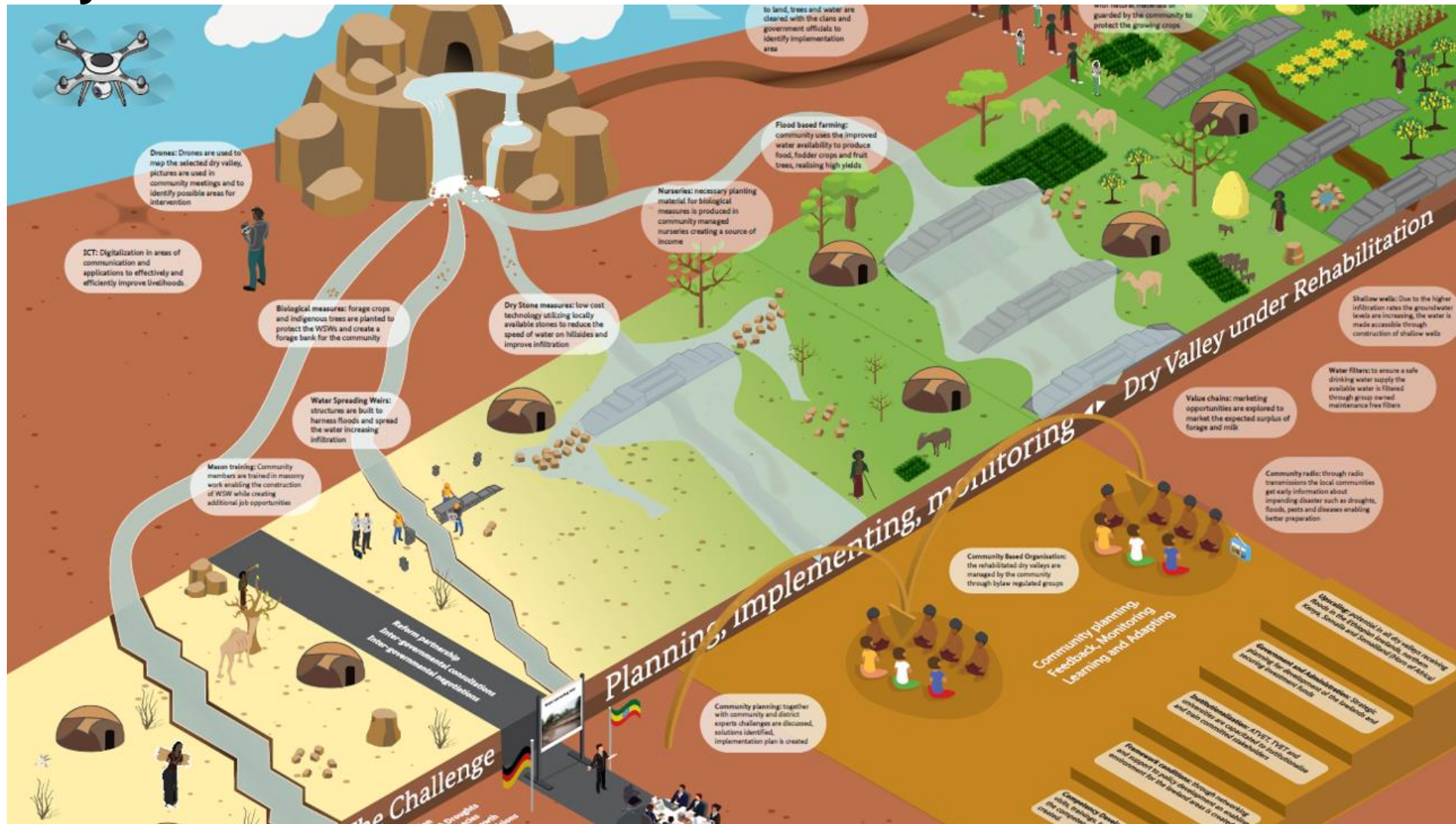
Mapping development interventions in the lowlands: supporting coordination at Woreda level

Hybrid DREAM Event. 21 June 2022

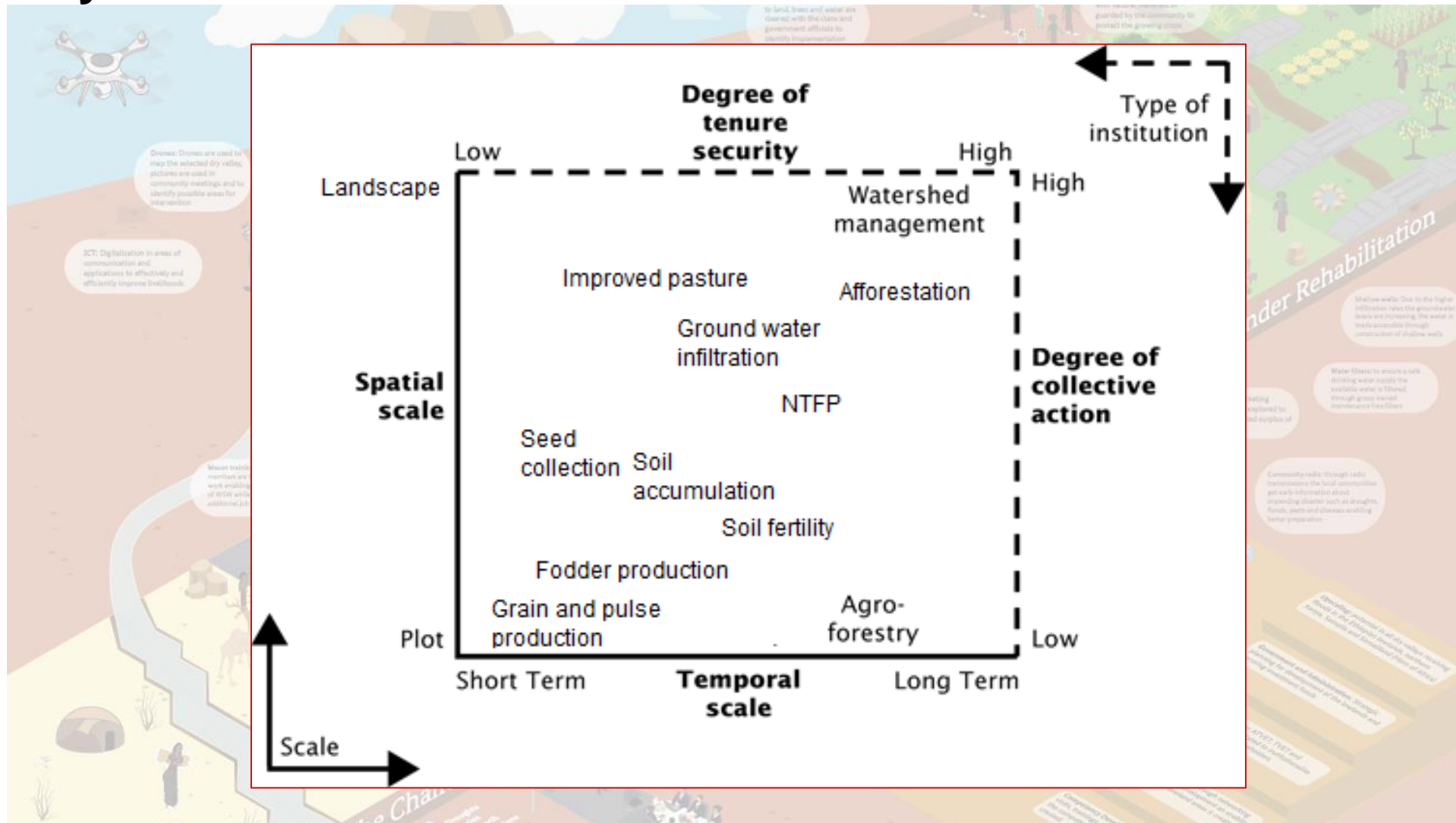
Dr Paul Roden, Advisor. Landscapes and Participatory Planning



# Dry Valley Rehabilitation and Productive Use



# Dry Valley Rehabilitation and Productive Use



Amended: Property Rights, Collective Action and Natural Resource Management. (Knox et al, 2001)

# Planning landscape

**Rationale:** sustainability depends on community ownership and support of a range of stakeholder. Achieved through a participatory process

**Alignment:** with the government planning processes

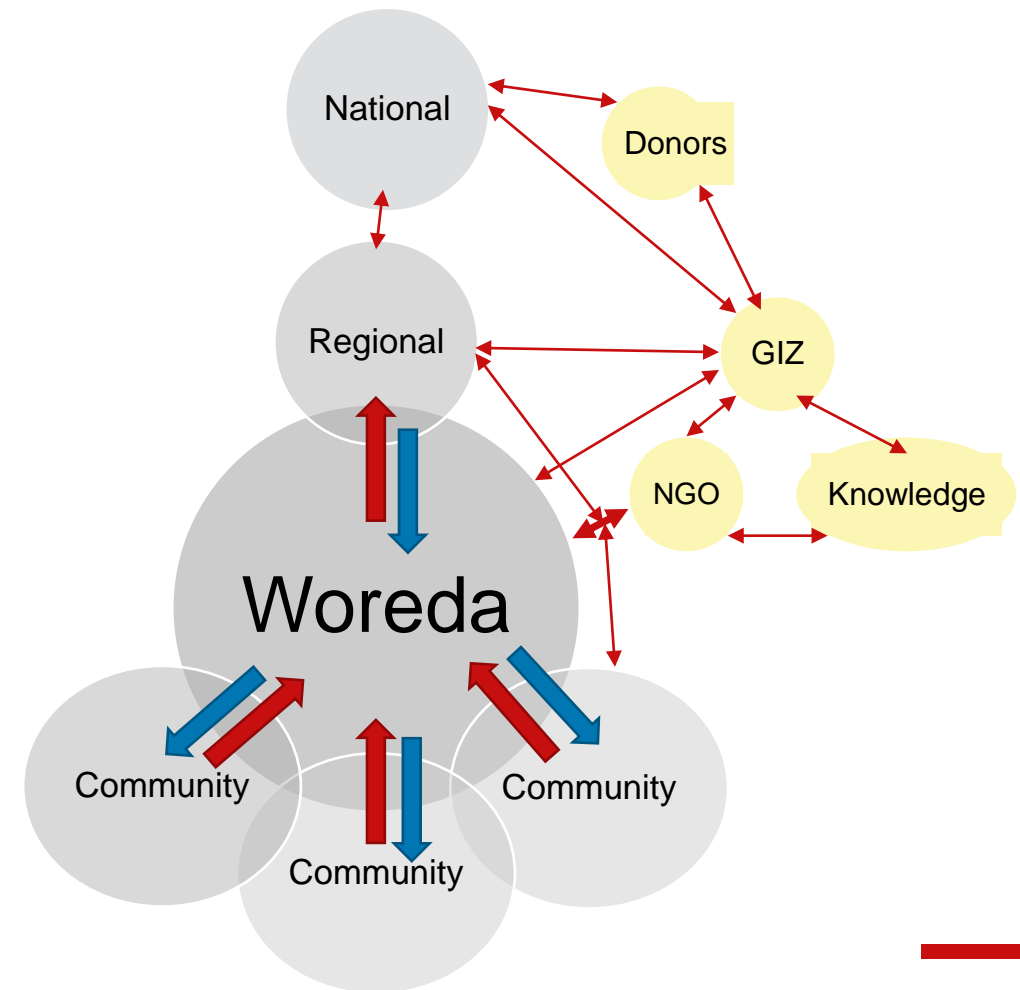
**Entry point:** The Woreda for planning and budgeting of activities

## Gaps

Poor levels of coordination, capacity and mediation of cooperation

There is scope to bridge the planning gap between all involved stakeholders

Possibly poor knowledge of development actors goals (plans) and resources





# Community planning for Dry Valley Rehabilitation and Productive Use



Figure 6: Woreda Head and Core Planning Team discuss community planning

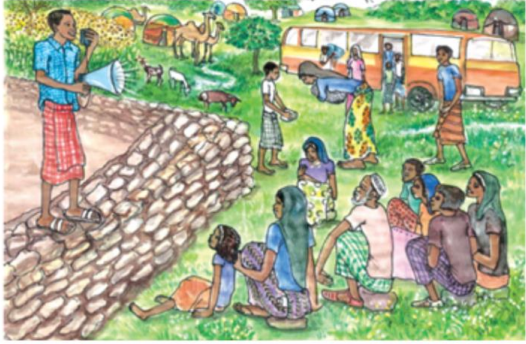
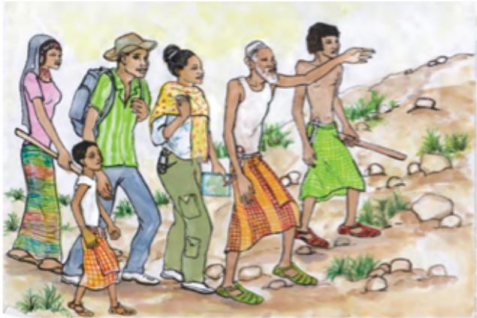
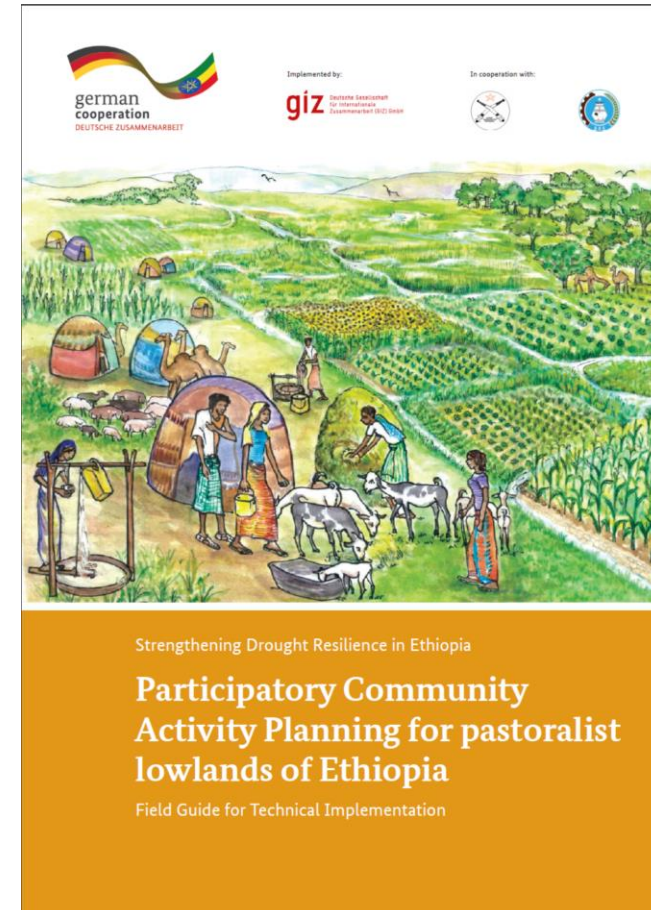


Figure 7: Electing the community planning team



# Woreda support to the planning process

1. **Technical advice** to regional and staff in Woreda to mainstream participatory planning results into the Woreda annual and five-year plans
2. Developed the **PCAP field guide** to support informed and inclusive decision-making and budget allocation
  - **A multi step process led by a woreda core planning team** which includes: site selection, awareness raising, early securing of stakeholder commitment, to....community planning of activities and a process to include these activities in woreda plans and budgets
  - **Infotechs:** a basket of approaches and technological **options and choices** for land rehabilitation and productive land use





# Woreda support to the planning process

## Training of DAs and Woreda Office experts in participatory approaches

- Trainings provided and a manual developed

**fundamental principles of participation promoted**

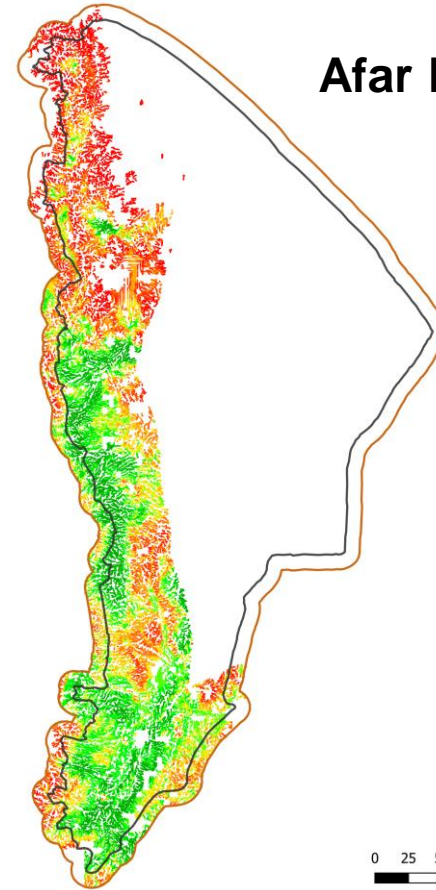


# Regional level support to the DVRPU planning process

Provision of remote sensed and GIS data and training on these tools for informed decision

Identify dry valleys that are suitable for land rehabilitation via satellite imagery and a suitability matrix

Identify most suited areas for rehabilitation





# Regional level support to the planning process

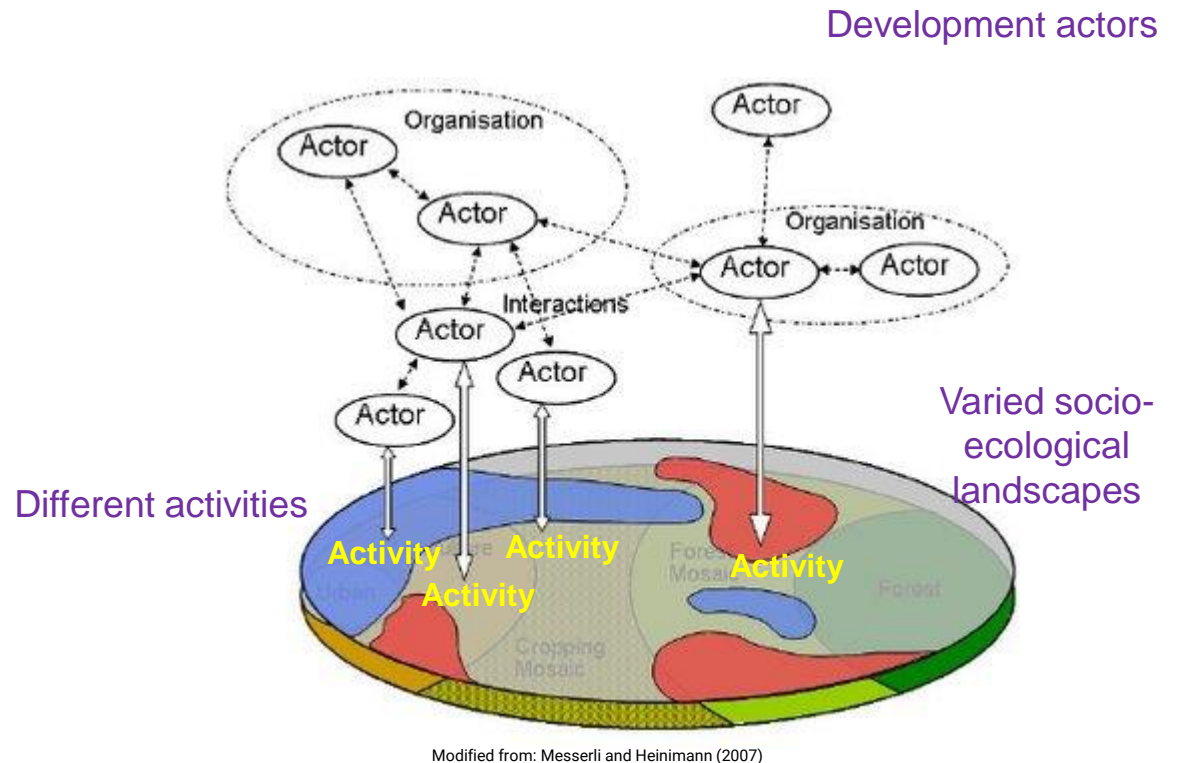
Developing a **decision-support tool** at the regional level for the coordination on land rehabilitation interventions

- a **geo-spatial database of DVRPU** related activities, actors and community status

**FOR** informed planning of interventions

**FOR** identification and monitoring of interventions, and their impact

**AND** improved efficiency and prioritization in resource use



Thank you!

